

RiverWest Appalachia Midstream

ABOUT RIVERWEST APPALACHIA MIDSTREAM

RiverWest Appalachia Midstream is a Pittsburgh based midstream company focused on dry gas gathering, compression and transmission of unconventional shale resources in the Appalachian Basin. RiverWest Appalachia Midstream is currently located in Pennsylvania in the counties of Allegheny, Armstrong, Butler, Centre, and Tioga.

WHAT DOES RIVERWEST APPALACHIA MIDSTREAM DO IF A LEAK OCCURS?

To prepare for the event of a leak, pipeline companies regularly communicate, plan and train with local emergency responders. Upon notification of an incident or leak the pipeline company will immediately dispatch trained personnel to assist emergency responders.

Pipeline operators and emergency responders are trained to protect life, property and facilities in case of an emergency.

Pipeline operators will also take steps to minimize the amount of product that leaks out and to isolate the pipeline emergency.

We ask for your help in identifying possible gas leaks and reporting any activity on or near our right-of-way which might cause damage to our pipeline.

Additionally, we will:

1. Shut down the pipeline and isolate the problem
2. Identify the hazards
3. Excavate and repair damaged pipeline

MAINTAINING SAFETY AND INTEGRITY OF PIPELINES

RiverWest Appalachia Midstream invests significant time and capital maintaining the quality and integrity of their gas gathering and transmission system. RiverWest Appalachia

Midstream utilizes on-ground observers to identify potential dangers, responds to locate requests received through its membership in the PA 1-Call System.

RiverWest Appalachia Midstream also conducts periodic patrolling of its pipeline system, performs annual instrumented leakage and corrosion surveys, performs regular maintenance on all system valves and regularly runs internal cleaning tools as well as intermittent in-line inspection tools to ensure the internal and external integrity of its pipelines is maintained.

PRODUCTS TRANSPORTED

Product: Natural Gas

Leak Type: Gas

Vapors: Lighter than air and will generally rise and dissipate. May gather in a confined space and travel to a source of ignition.

Health Hazards: Will be easily ignited by heat, sparks or flames and will form explosive mixtures with air. Vapors may cause dizziness or asphyxiation without warning and may be toxic if inhaled at

EMERGENCY CONTACT:

1-800-673-6724

PRODUCTS/ DOT GUIDEBOOK ID#/ GUIDE#:

Natural Gas 1971 115

PENNSYLVANIA COUNTIES OF OPERATION:

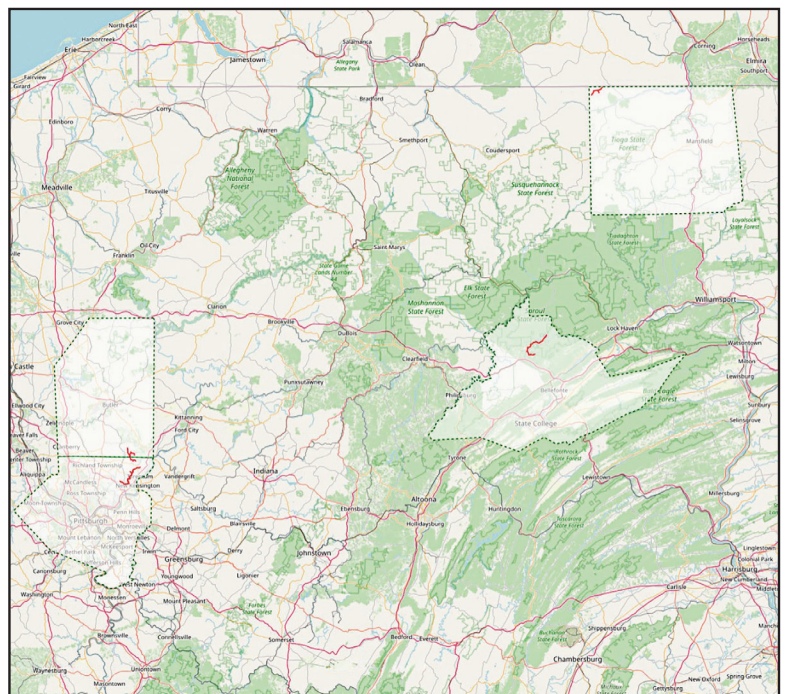
Allegheny Centre
Butler Tioga

Changes may occur. Contact the operator to discuss their pipeline systems and areas of operation.

high concentrations. Contact with gas or liquefied gas may cause burns, severe injury and/or frostbite.

HOW TO GET ADDITIONAL INFORMATION

For an overview of RiverWest Appalachia Midstream go to www.stonehengeenergy.com or contact us at 800-673-6724.



Base map courtesy of openstreetmap.org